



GUANGDONG BOSHUN BELTING CO.,LTD.

博力顺
BO LI SHUN

Product Data Sheet

Type: 90P32-46/43

Main industry segments

Wood

Applications

Wood grinding machine

Color code

RAL 7046

Product structure

Top cover

-Thickness	6.0 mm
-Material	PVC+Rubber(20%)
-Features	Very high friction, Wearproof
-Color	Grey
-Surface	Grinding square
-Hardness	50° ShoreA

Bottom cover

-Thickness	0.5 mm
-Material	Polyester monofilament
-Features	Lateral stability
-Color	Grey
-Surface	Impregnated fabric
-Hardness	-

Technical data

Total thickness	9.0 mm
Number of plies	3
Weight	8.1 kg/m ²
Maximum width	2000 mm
Effective pull at 1% elongation	18 N/mm
Twisting force	29 N/mm
Maximum admissible tension	30 N/mm
Breaking strength	300 N/mm
Temperature range	-15 °C ~ +80 °C

Minimum roll diameter

Normal flexion	148 mm
Counter flexion	160 mm

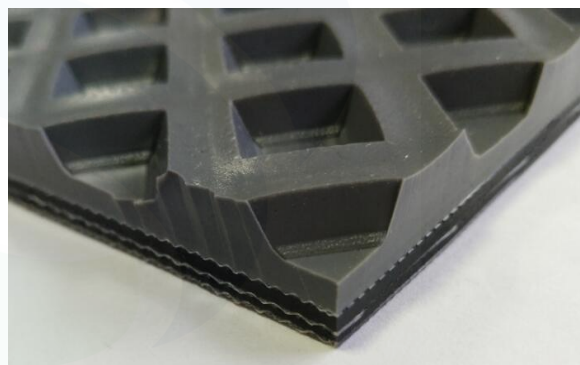
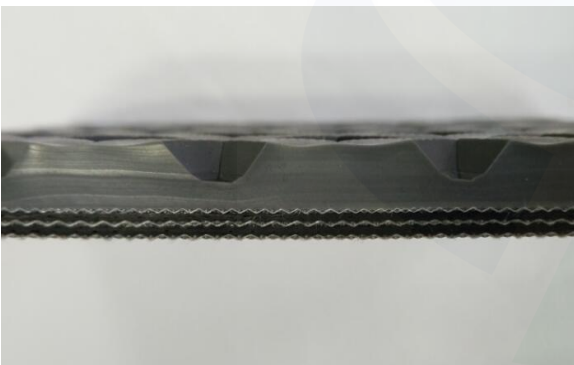
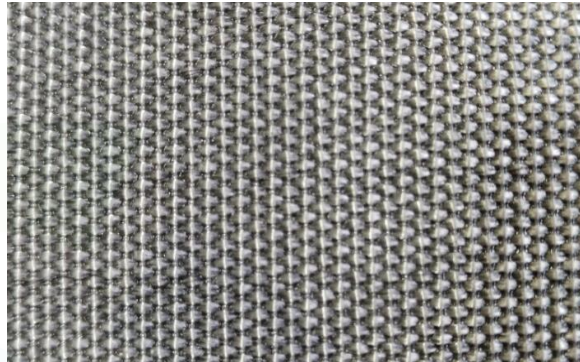
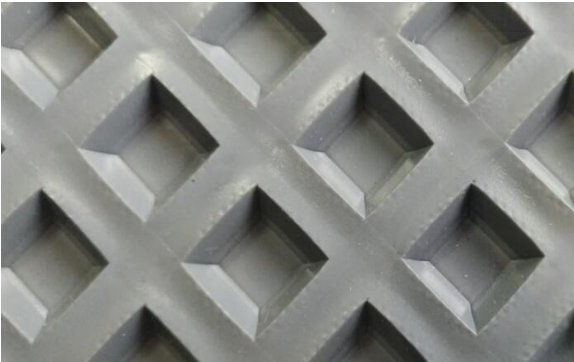
Characteristic

Slide	Yes	Flame retardant	No
Roller	Yes	Cold resistant	No
Trough	No	Knife edges	No
Antistatic	No	Curves	No
Oil and fat resistant	No	Guides	No
FDA	No	Cleats	No
Low noise	No	Sidewalls	No

Product photos



博力顺
BO LI SHUN



Joining methods

Three-layer finger

Disclaimer

All data are approximate values and defined under the following standard climatic conditions.
23 °C, 50 % relative humidity (ISO 554).

All informations are recommendations and believed to be reliable, but no representations, guarantees, or warranties of any kind are made as to their accuracy or suitability for particular applications. Due to the fact that Boshun Belting has no control of use, we will not assume any liability concerning the suitability and process ability of the products mentioned herein. This also applies to defects, damages, consequential damages, and other consequences

Issued: 2018.12.17

Last update: 2019.01.02

www.boshunbelting.com

info@boshunbelting.com