



GUANGDONG BOSHUN BELTING CO.,LTD.

博力顺
BO LI SHUN

Product Data Sheet

Type: 48P22-26/6A

Main industry segments
Food

Applications
Poultry, Sea food processing

Color code
RAL 9003

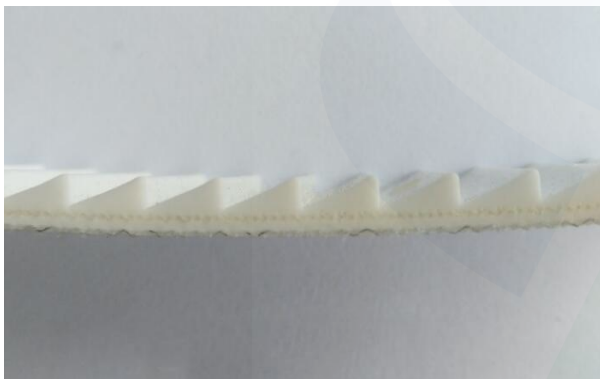
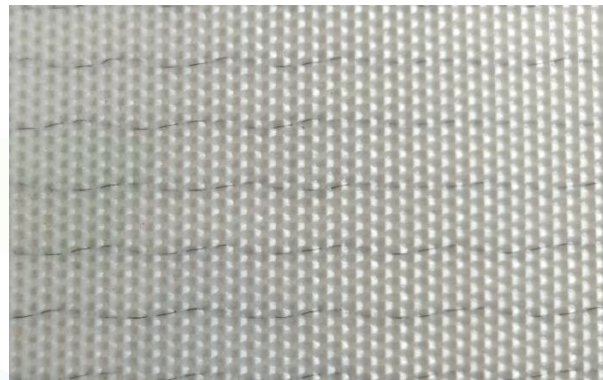
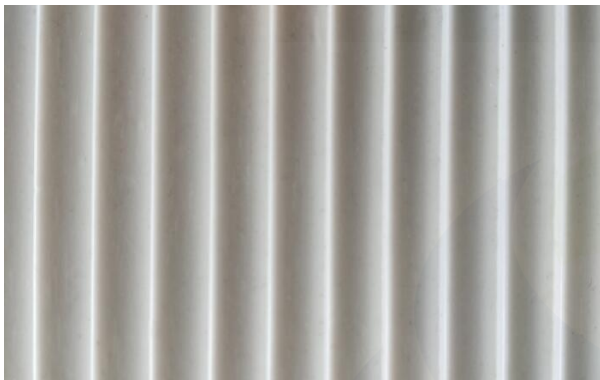
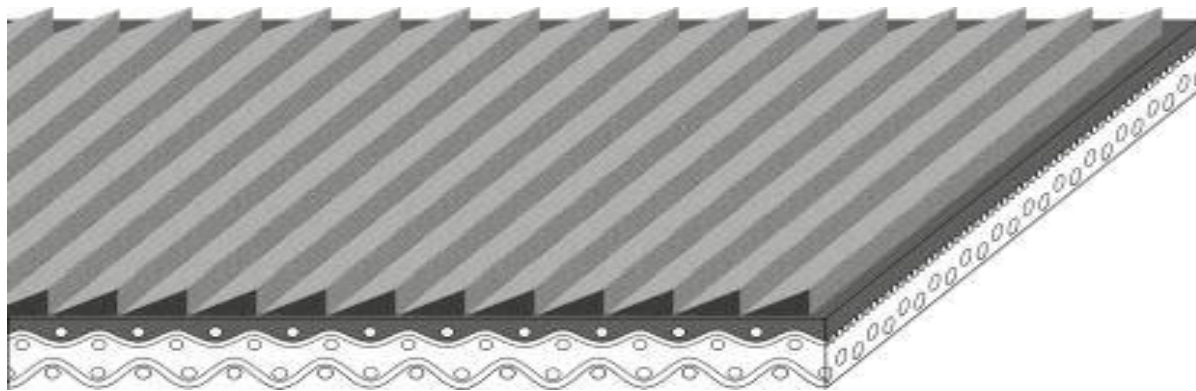
Product structure	
Top cover	
-Thickness	3.0 mm
-Material	Polyvinyl chloride (PVC)
-Features	Incline conveying
-Color	White
-Surface	Saw tooth
-Hardness	65° ShoreA
Bottom cover	
-Thickness	0.5 mm
-Material	Polyester monofilament
-Features	Lateral stability
-Color	-
-Surface	Rigid fabric
-Hardness	-

Technical data	
Total thickness	4.8 mm
Number of plies	2
Weight	4.8 kg/m ²
Maximum width	2000 mm
Effective pull at 1% elongation	10 N/mm
Twisting force	16 N/mm
Maximum admissible tension	18 N/mm
Breaking strength	180 N/mm
Temperature range	-15 °C ~ +80 °C

Minimum roll diameter	
Normal flexion	60 mm
Counter flexion	120 mm

Characteristic			
Slide	Yes	Flame retardant	No
Roller	Yes	Cold resistant	No
Trough	No	Knife edges	No
Antistatic	No	Curves	No
Oil and fat resistant	No	Guides	No
FDA	No	Cleats	No
Low noise	No	Sidewalls	No

Product photos



Joining methods

Double finger

Disclaimer

All data are approximate values and defined under the following standard climatic conditions. 23 °C, 50 % relative humidity (ISO 554).

All informations are recommendations and believed to be reliable, but no representations, guarantees, or warranties of any kind are made as to their accuracy or suitability for particular applications. Due to the fact that Boshun Belting has no control of use, we will not assume any liability concerning the suitability and process ability of the products mentioned herein. This also applies to defects, damages, consequential damages, and other consequences

Issued: 2018.12.24

Last update: 2019.04.20

www.boshunbelting.com

info@boshunbelting.com